



legacy Maker



SUSTAINABLE MEAT
— SUPERIOR MEAL —

Located 75 miles north of Indianapolis, our cattle and hogs are humanely raised in Reynolds, Indiana. Legacy Maker meat is responsibly raised, processed and distributed in Indiana. All of our processes are also maintained with an active and unrivaled respect for our environment.

Legacy Maker uses natural, antibiotic-free and no added hormone feed for our livestock. We ensure a slow maturation of our cattle. Our cattle are raised slow and without antibiotics or growth hormones and not rushed to market. This relaxed pace allows the animal to gain weight, muscle and fat at the pace nature intended.

Legacy Maker's beef is perfect for people with a passion for these products. Our promise to never compromise on the care of our animals means we produce higher quality meats, giving us the ability to exceed the expectations of every customer from top chefs to at-home grill masters.



Legacy Maker Ground Beef & Burger Items :

- #45377 - Ground Beef 80/20, 4x5 lb
- #45813 - Fresh Ground Beef 73/27, 4x5 lb*
- #45461 - Signature Blend Beef*
- #45391 - SB Beef Patty 10oz*
- #45375 - Beef Patty 2:1
- #45371 - Beef Patty 3:1
- #45373 - Beef Patty 4:1*
- #45815 - Beef Patty 5:1*

* = Special Order Items



All burger cases are 20 lbs - 10x2 lb
vacuum packed patties with patty paper

**FOR SPECIAL ORDER ITEMS,
ORDER BY 11AM MONDAY
THROUGH THURSDAY FOR
SKIP DAY DELIVERY.**

PIAZZA
— SINCE 1970 —
PRODUCE
& SPECIALTY FOODS

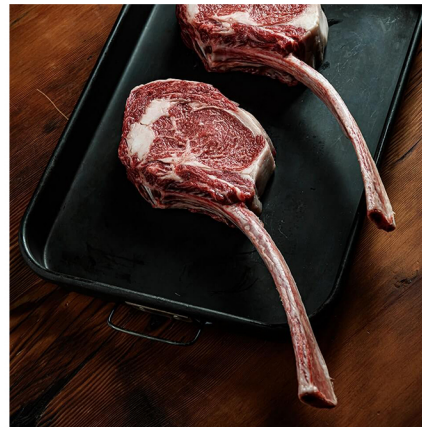
Contact your local Piazza Produce Sales Rep to place your order or call 317-872-0101.
www.piazzaproduce.com

Whole Muscle

- #46235 - Whole Tenderloin, 6 pcs, 28 lb avg
- #06068 - Beef Ribeye, 2 pcs, 28 lb avg
- #46237 - Striploins, 2 pcs, 28 lb avg
- #45021 - Brisket Deckle Off, 2-14 lb
- #45555 - Eye of Round, 6x4 lb, 25 lb avg
- #45604 - Flanks Trimmed, 5x2 lb avg
- #45865 - Rib Bone In Export, 1 each
- #45801 - Short Loin Bone In, 25 lb avg
- #45817 - Sirloin Tip Knuckle, 37 lb avg
- #45853 - Shoulder Clod, 4x9 lb avg
- #45854 - Short Rib Boneless Denver, 10 lb avg
- #46231 - Beef Short Rib Boneless, 15 lb avg
- #46294 - Beef Short Rib Bone In, 2 pcs, 28 lb avg
- #45855 - Chuck Roll, 2x20 lb avg
- #45858 - Chuck Eye Roast, 2x7 lb avg
- #45857 - Inside Round Cap Off, 2x11 lb avg
- #45859 - Bottom Round, 3x12 lb avg
- #45856 - Inside Skirt, 10 lb avg
- #04940 - Bavette Steak, 6 pcs, 18 lb avg
- #45863 - Top Sirloin Butt Capp Off, 2x7 lb avg
- #46375 - Sirloin Cap Whole Muscle, 5x2 lbs
- #46383 - Flat Iron Whole Muscle, 7x2 lb avg

Steaks

- #46508 - Beef Filet FC 4oz, 40 pc, 10 lb avg
- #46504 - Beef Filet FC 6oz, 28 pc, 10 lb avg
- #46518 - Beef Filet FC 8oz, 24 pc, 12 lb avg
- #46514 - Beef Filet Bites, 10 lb avg
- #46505 - Ribeye Steaks 10oz, 20 pc, 12.5 lb avg
- #46509 - Ribeye Steaks 12oz, 18 pc, 13.5 lb avg
- #46513 - Ribeye Steaks 14oz, 14 pc, 12.25 lb avg
- #46519 - NY Strip Steak 10oz, 20 pc, 12.5 lb avg
- #46516 - NY Strip Steak 12oz, 16 pc, 12 lb avg
- #46512 - NY Strip Steak 14oz, 16 pc, 14 lb avg
- #46517 - Sirloin Steak 6oz, 28 pc, 10 lb avg
- #46520 - Sirloin Steak 7oz, 24 pc, 10 lb avg
- #46506 - Sirloin Steak 8oz, 20 pc, 10 lb avg
- #45811 - Sirloin Steak 9oz, 16 pcs
- #46511 - Sirloin Coulotte 6oz, 24 pc, 9 lb avg
- #46507 - Flat Iron 8oz, 24 pc, 12 lb avg
- #45825 - Tomahawk Ribeye Steak, 7pc, 13 lb avg
- #46503 - Cubed Steak 5oz, 40 pc, 12.5 lb avg
- #46521 - Beef Trim 80/20, 30 lb avg
- #45802 - Beef Fat, 25 lb avg
- #45852 - Beef Shank, 2x7 lb avg
- #45851 - Beef Bone Canoe Cut, 30 lb avg



**FOR SPECIAL ORDER ITEMS,
ORDER BY 11AM MONDAY
THROUGH FRIDAY FOR
NEXT DAY DELIVERY.**



**Contact your local Piazza Produce Sales Rep to place your order or call 317-872-0101.
www.piazzaproduce.com**